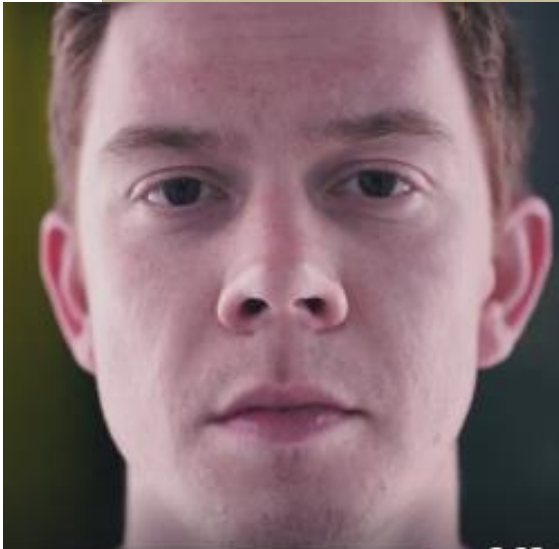
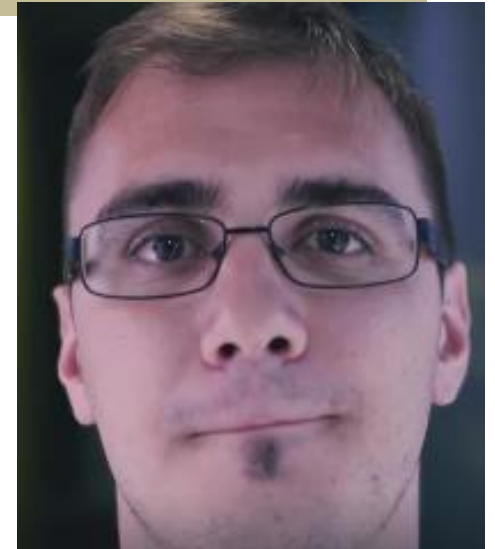




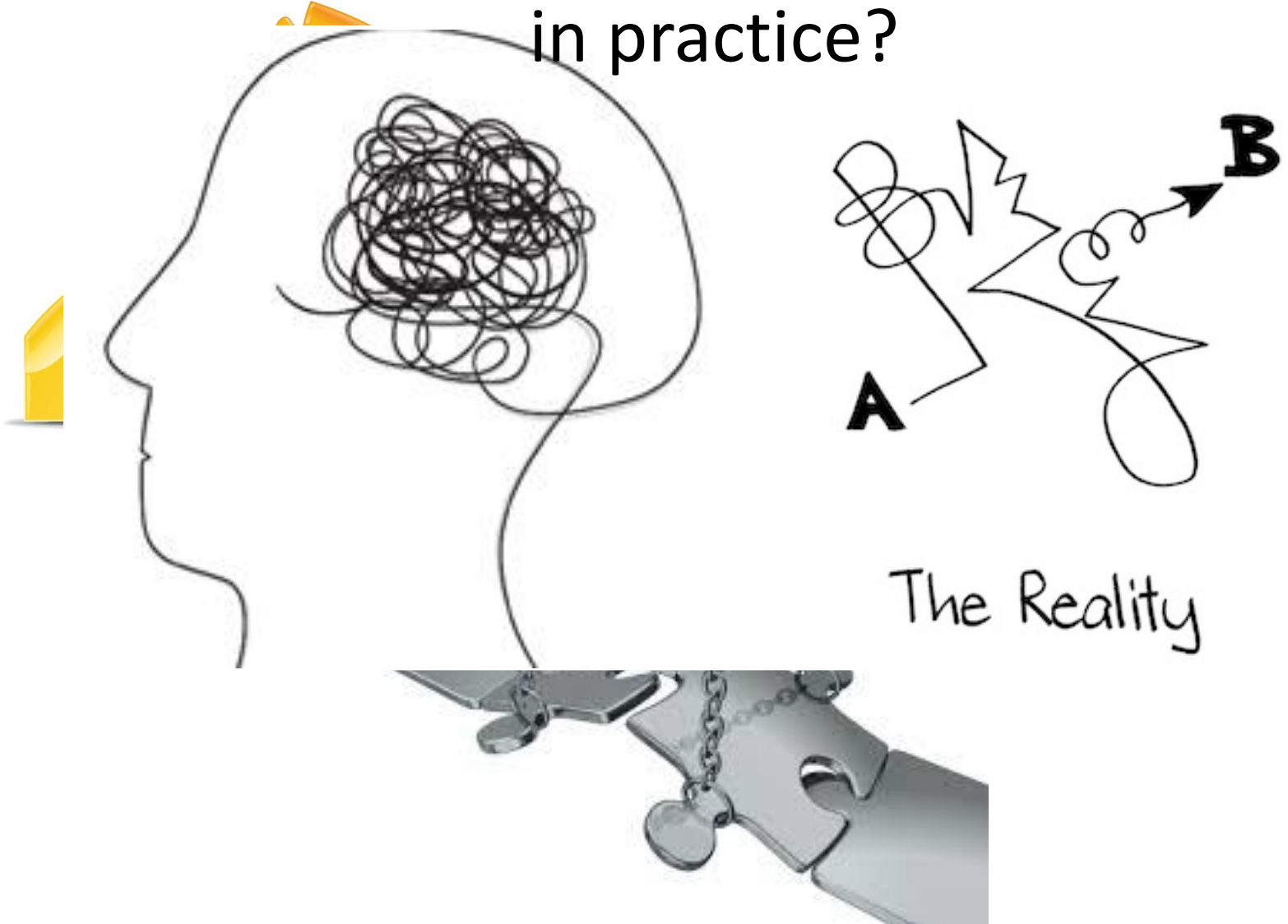
Building Capacity in a Disadvantaged Rural Area to Engage Young Men.



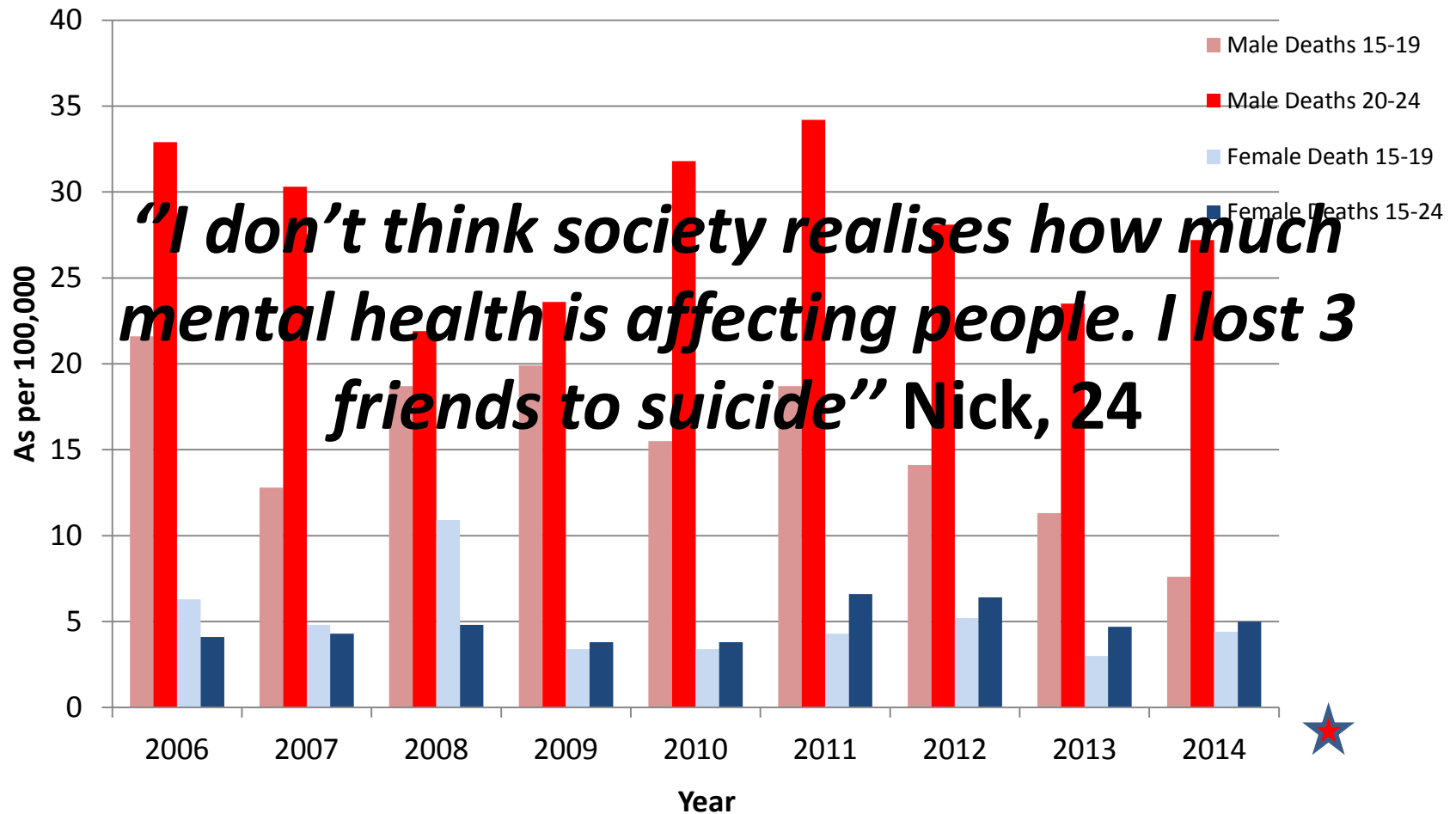
Shane O'Donnell
I.T. Carlow



How can we bridge the gap between evidence of effectiveness and what occurs in practice?

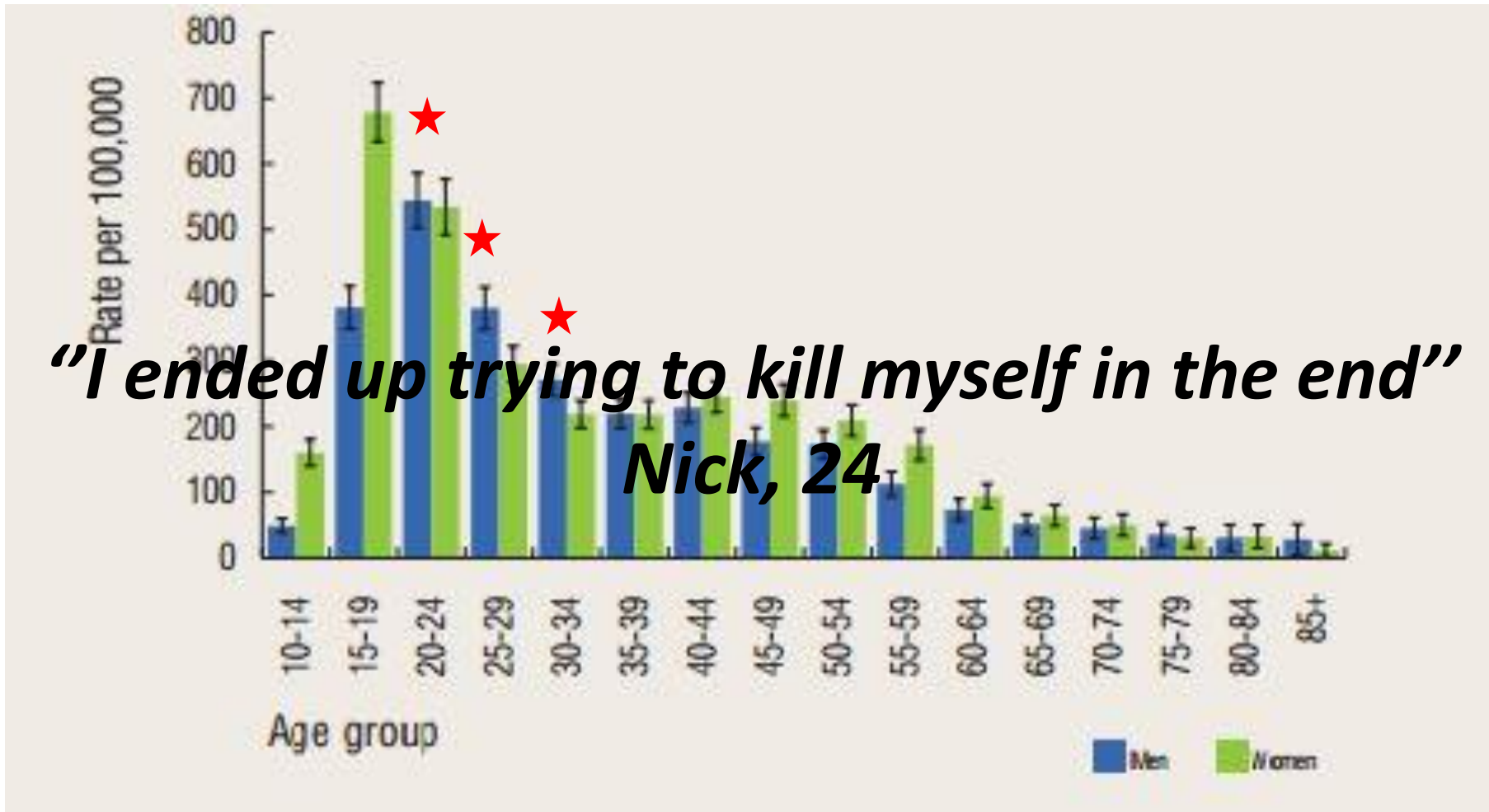


15-24yr old suicide rates per 100,000 Ireland



Data for 2014 is by year of registration and is subject to future amendments. Data for 2011 and prior years are final data.

Self harm rates by age and gender 2014 in Ireland



Source: National Suicide Research Foundation (2015) National Registry of Deliberate Self Harm Annual Report 2014.

Why is this happening?

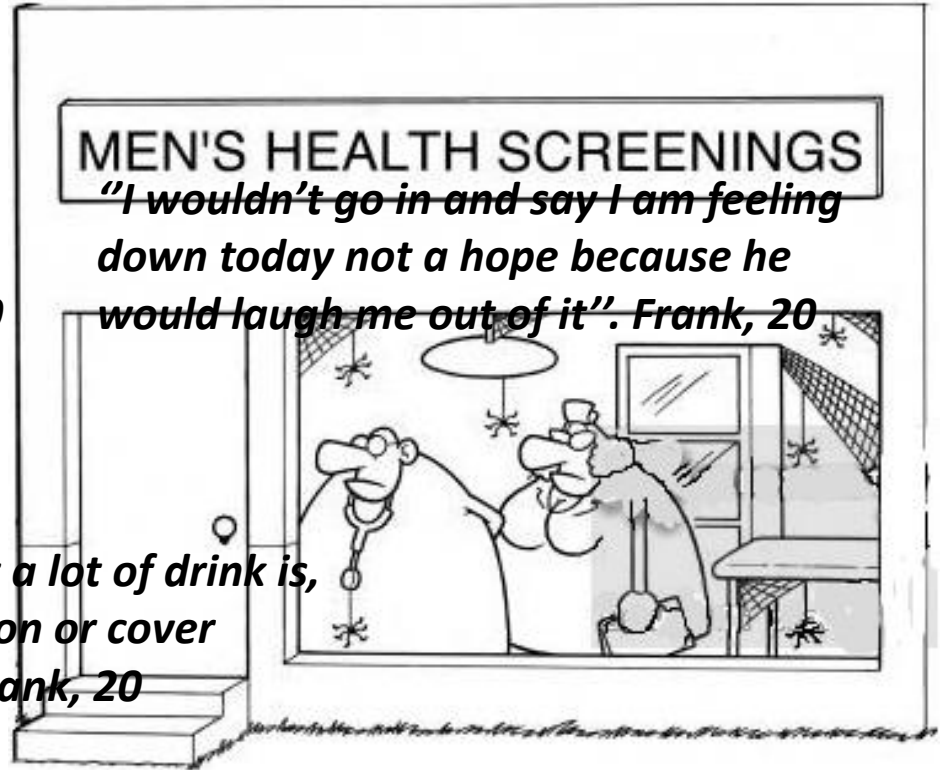
INTERNATIONAL
MIME
CONVENTION

MARCEL'S
UNDER STRESS
AGAIN - BUT
HE DOESN'T
WANT TO TALK
ABOUT IT

"Because we are like tigers, we have to portray that we are strong but we could be weak as shit inside". Frank, 20



"That is what a lot of drink is, to get attention or cover things up". Frank, 20



MEN'S HEALTH SCREENINGS

"I wouldn't go in and say I am feeling down today not a hope because he would laugh me out of it". Frank, 20

Methodology

Aim

To support an
community to
specific program
prevent and res

‘To support local
communities’ capacity
to prevent and respond
to suicidal behaviour’.

SG2

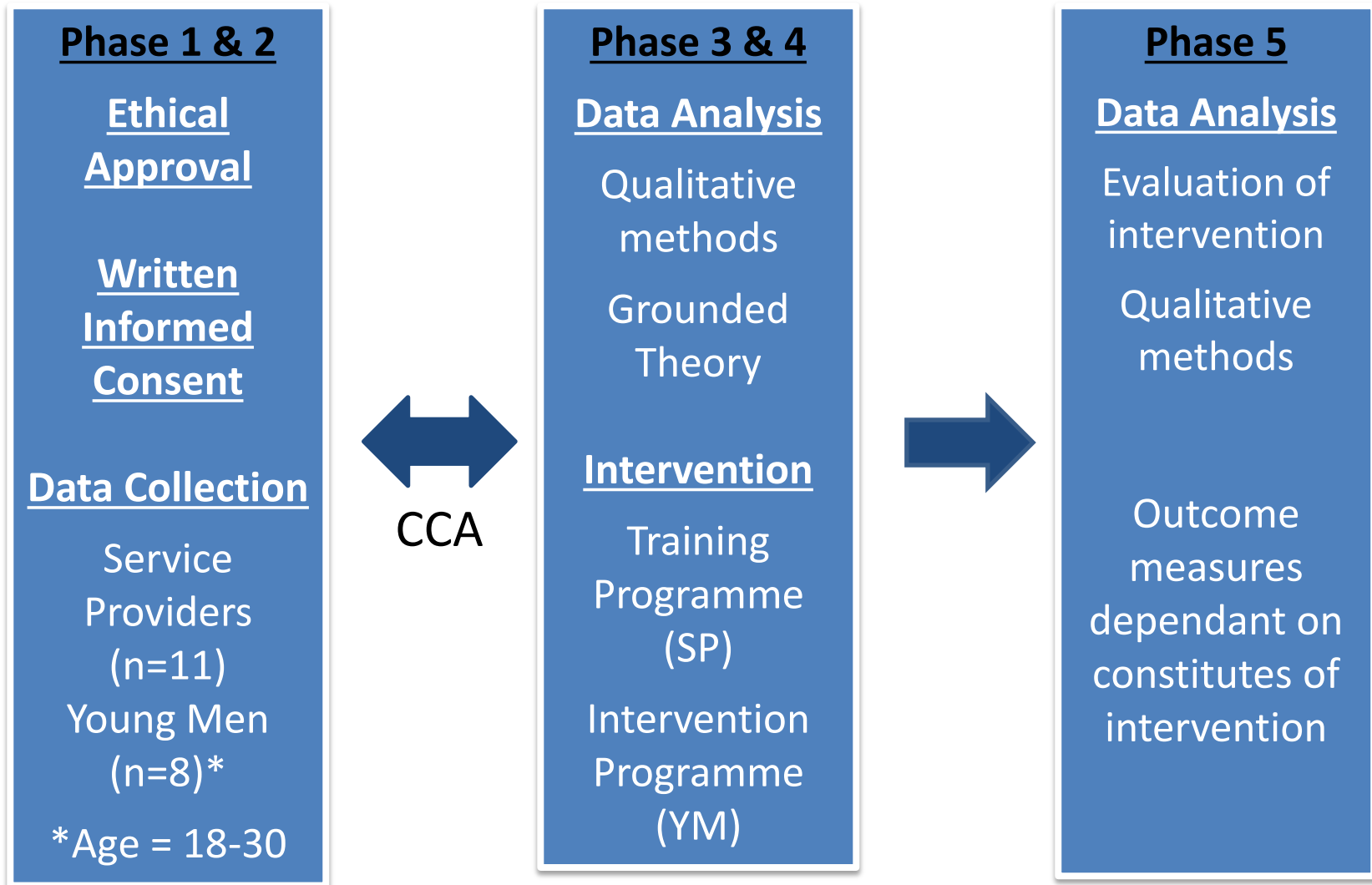
...to provide
community-based
organisations with
guidelines, protocols
and training on
effective suicide
prevention’ (Action
2.2.1)

capacity of a local
ive and gender-
o young men to
iour.



National Office for
Suicide Prevention

Methodology



Community Capacity Building

Bottom Up Approach	Partnership Approach	Community Organising Approach	Top Down Approach
<p>“...developing core of well trained individuals”</p>	<p>“...development of partnerships between organisations or groups”</p>	<p>“...working with communities... most disenfranchised members... to solve health issues”</p>	<p>Changing agency policy and practice</p>
<p>Training (SP)</p>	<p>Intervention (YM)</p>	<p>YM consultation</p>	<p>?</p>

Crisp et al, 2000

Evidence of Effective Practice

Young Men and Suicide Project (Richardson et al, 2013);

- Developing mental health programmes targeted at young men most in need.
- Consultation with young men in development of programmes.

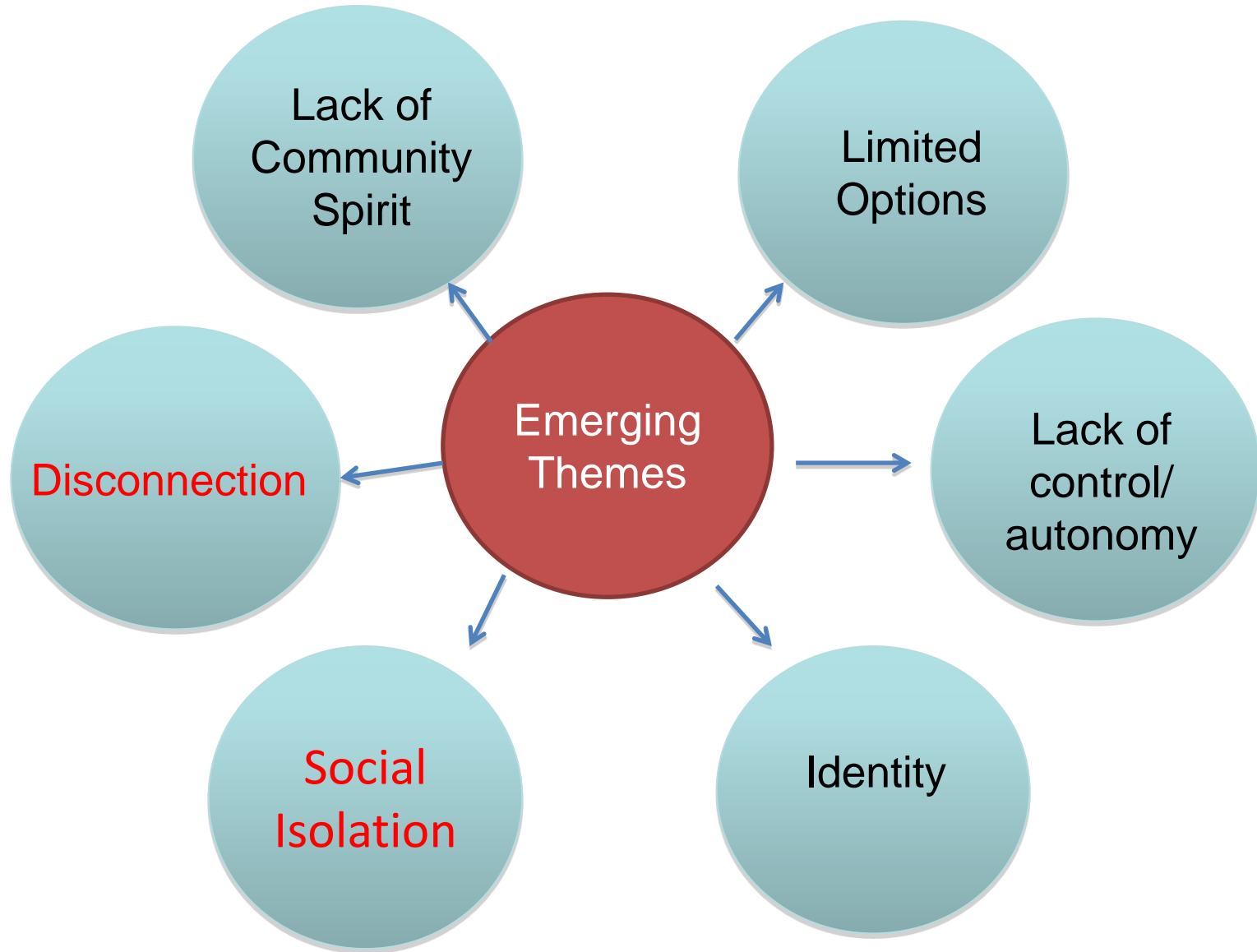
Engaging Young Men Project (Grace et al., 2014).;

- Service provision prioritise needs of young men, collaborative approach with other services.

Ireland National Men's Health Policy (Department of Health and Children, 2009).

- Finding a hook and a 'way in' to appeal to men.

Preliminary Findings



Disconnection –

“...we don't have the time to put into developing something for them (men)”. Sandra, Resource Centre. (SP).

“The support is here in the town....opportunities are being offered there the whole time. It's just like, maybe they are not doing it in the right way?”. James, Improvement Group (SP).

“When you hear people going on about the resource centre we don't even know what's in it. What's happening in it? Tom, 21.

Social Isolation –

“I think a lot of people around here are confined to themselves. The majority of them don't like socialising with a lot of people”. Nick, 24.

“They would be the two biggest things, having a good job and socialising a lot more”. Fred, 20.

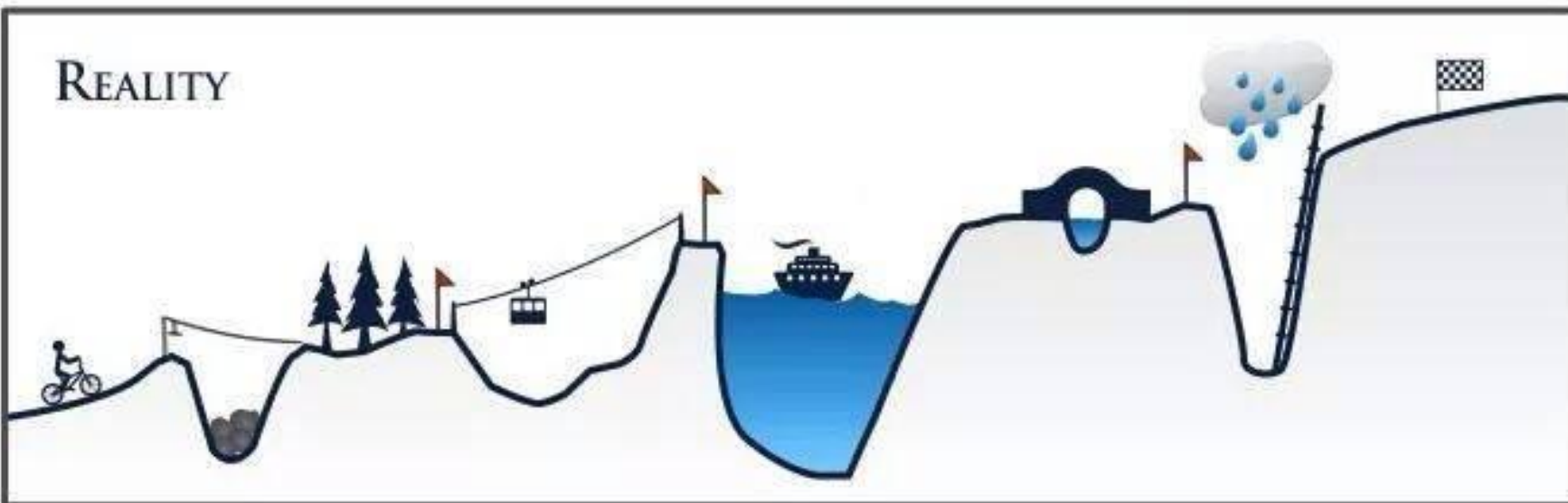
CCB: Challenges/Paradoxes

- Role of health promoter not to develop new programme called CCB... 'Parallel Track'. (Labonte and Laverack , 2001a).
- Community identified, consensus may not gel with evidence base (Hounslow, 2002)
- May increase inequalities (Craig et al, 2007).

YOUR PLAN



REALITY



Shane O'Donnell

Email: shaneodonnell92@gmail.com
shane.odonnell@itcarlow.ie

Phone: 085 7088709